

Since 1999

# charleston

## HOME+DESIGN

summer  
2020

## Robert & Lydia Mondavi Jr.,

Wine Moguls, Open Their St. Helena  
Island Residence to Talk About  
Where They Wine and Unwind

61+  
OUTDOOR LIVING  
SPACES

CharlestonHomeAndDesign.com



CHARLESTON SYMPHONY ORCHESTRA LEAGUE'S



# 2020 DESIGNER SHOWHOUSE

EXCLUSIVE, NEVER BEFORE SEEN PHOTOGRAPHS

The Fitch-Rivers house, built in 1883, is rich with history that the designers honored in their rooms. Though separate spaces, designed by different people, the Charleston single still showcases a cohesive feel throughout, with shades of blue seen in nearly every room. Page through this section to learn about the inspiration behind their designs and how they brought their spaces to life. The home is set to open as a bed and breakfast, The Bee and Blossom, later this year.







Photography by Patrick Brickman



THE SPACE:

## THE GARDEN

Linda believes the garden is a reflection of the home that creates a seamless connectivity from the outdoors to the indoors. With that in mind, she installed elements such as the water fountain, mirrors, and ornamental trees and shrubs to change with the seasons so guests

are welcomed all year round. In order to honor the home's history and maintain a historic feel, an array of color, texture, and fragrance was used in the plethora of greenery along with the décor items.

THE DESIGNER:

LINDA GREENBERG of Linda Greenberg Landscape & Design

For more information, call Linda Greenberg Landscape & Design at (704) 995-7173.







Photography by Patrick Brickman



#### THE SPACE:

## FOYER, STAIRWELL, AND GALLERIES

With an image of guests sipping cool drinks and stepping out onto the piazza, Alexandre designed the gallery hall for people to congregate and wonder. She drew inspiration from Dale Powell's 'Spirit of SC' which depicts a modern day sailboat in Charleston

harbor. The history of the city is seen in the work and Alexandre wanted the history to be shown in her space as well. A favorite piece in the gallery hall is 'Lost in Thought' by Sally Hughes Smith.

#### THE DESIGNER:

ALEXANDRE FLEUREN of Alexandre Fleuren Interiors

For more information, call Alexandre Fleuren Interiors at (843) 437-1396 or visit [designafi.com](http://designafi.com).







Photography by Patrick Brickman



#### THE SPACE:

## THE PARLOR

This designer was inspired to create a European pied a terre ambiance in the parlor. A fireplace welcomes guests to come and relax on the settees. Large windows are flanked with elegant drapes that puddle to the floor. The finishing touch is an abstract art piece by Jennie

Weiss Glass titled 'Temptation'. This painting, from Mitchell Hill, hangs above a long metal console. Anchoring mood lighting without natural light wasn't necessarily an easy task, however, the simple cream walls make the space feel much brighter. The fireplace calls for long conversations in a cozy space.

#### THE DESIGNER:

**T. PHILLIPS** of Latitude Design Group, LLC

For more information, call Latitude Design Group at (201) 565-6381 or visit [wtphillips.com](http://wtphillips.com).







Photography by Patrick Brickman

THE SPACE:

## THE DINING ROOM

The original fireplace in the dining room was flanked by windows with L-shaped benches. These features helped Bobbi Jo envision cozy window seats with dining for the inn. The garden scheme included Asian screens with water scenes with cranes and lilies—gardens are quintessential in Charleston so this was an obvious

choice for Bobbi Jo. She also created two very unique pieces to complete the garden theme. A plain table was covered with cuts of mirror and painted by local artist Suzanne Leonard and a copper chandelier was fabricated by Coastal Copper with a ginkgo leaf design.

THE DESIGNER:

BOBBI JO ENGELBY of Domain Interiors by Bobbi Jo Engelby

For more information, call Domain Interiors by Bobbi Jo Engelby at (843) 388-0328 or visit [domainmtp.com](http://domainmtp.com).







Photography by Patrick Brickman



THE SPACE:

# THE PETIT SALON

A lot of work didn't scare Lauren away when she was designing her perfect sitting nook. Inspired to create a space reminiscent of one of her favorite places, Scotland, Lauren designed with warmth in mind. The space needed to feel welcoming and inviting; an area where people can sit and enjoy a scotch.

The old Charleston walls provided the space with a lot of texture, that Lauren incorporated into her design by using bold colors which added character to the salon and told the historic story of the space. An antique Persian rug ties in the elements, including an original piece of art by Anne Darby Parker.

THE DESIGNER:

LAUREN MESSINA of Lauren Messina Interior Design

For more information, call Lauren Messina Interior Design at (843) 345-2660 or visit [laurenmessinadesign.com](http://laurenmessinadesign.com).







Photography by Kim Graham



THE SPACE:

## THE KITCHEN

A space tucked in the back was full of potential with lots of windows and high ceilings. Ample cabinet space allowed Heidi to create a functional kitchen with style. The inn is called The Bee and Blossom so Heidi was inspired by both the name and logo to design with subtle bee and honey accents such as

hex shapes, and shades of blue and gold. Repeating bee elements—the hex tile and brass hardware, painted bees on the ceiling returning to the hive pendant light fixtures, and the swaths of honey through the quartz counter, all continue to pay homage to the inn and offer a fun design scheme for the space.

THE DESIGNER:

HEIDI HUDDLESTON, CKD of Delicious Kitchens & Interiors

For more information, call Delicious Kitchens & Interiors at (843) 901-1270 or visit [deliciouskitchens.com](http://deliciouskitchens.com).







Photography by Patrick Brickman

THE SPACE:

# THE MUSIC SALON

The staple baby grand piano in every CSOL Designer Showhouse had the perfect home in front of the bay window in the music salon. A good proportioned space with abundant natural light allowed Allyson to decorate with plenty of furniture and accessories. Allyson used a Cowtan & Tout wallpaper, that she

had been eying for months, to pull all of the details together. The heavy grasscloth material added texture and paired perfectly with the blue curtains and green mottled fireplace tile. This room showcases a variety of reflective elements and bold patterns to create a unique and cohesive design.

THE DESIGNER:

ALLYSON KIRKPATRICK of AllysonK Designs

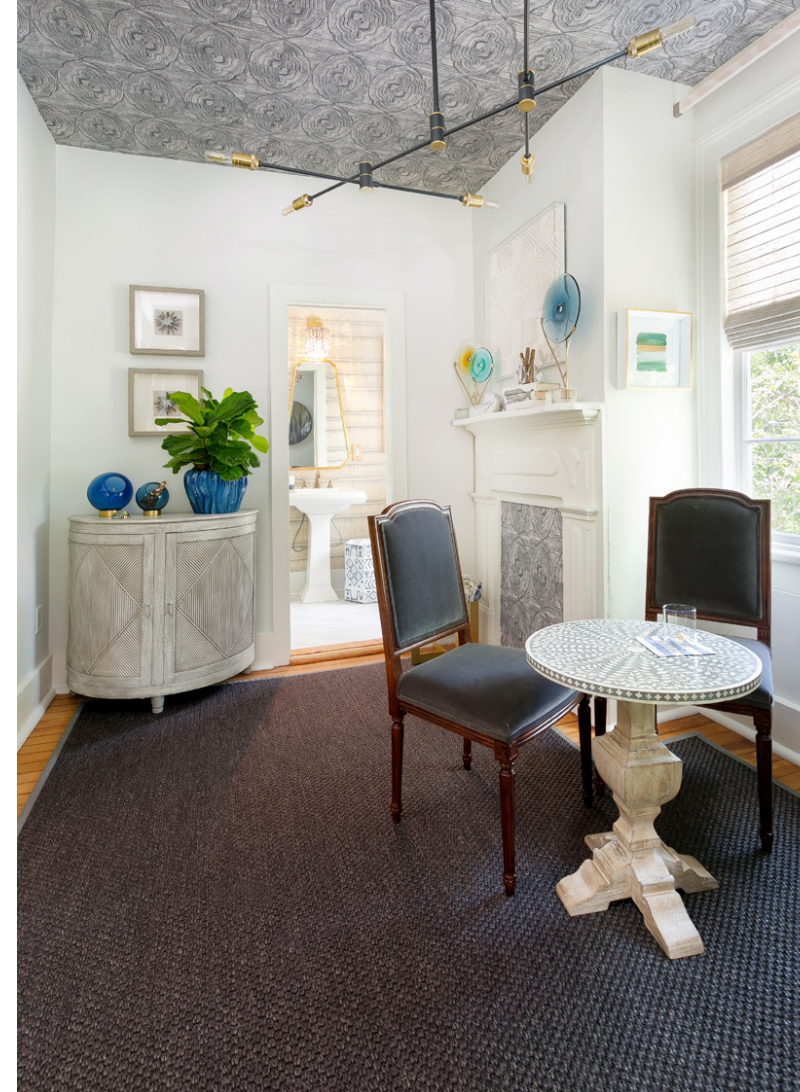
For more information, call AllysonK Designs at (256) 651-8628 or visit [allysonkdesigns.com](http://allysonkdesigns.com).







Photography by Patrick Brickman



## THE SPACE:

# THE LOUNGE & BATH

Cultivating an intimate lounge area that invited guests to sit for a while was the driving force behind Caroline's lounge design. Complete with mixed metals, glass art objects, rich hues, and the 'Classic Blue' 2020 Pantone Color of the Year, the elements pair together to create a modern gentleman's lounge. The idea was to invite

guests to sit, read, play, and sip for a while and with the combination of velvet and linen textures, why wouldn't they want to? Three dimensional effects are created with a charcoal wallcovering on the ceiling making it one to remember. Unique light fixtures and contemporary art also play into the overall modern feel of this lounge.

## THE DESIGNER:

CAROLINE DEVLAMING FARRIOR of deVlaming Design

For more information, call deVlaming Design at (843) 270-5200.







Photography by Chris and Cami Photography



THE SPACE:

## THE READING ROOM

Amazing light immediately peeked Sandra's interest in the reading room. B&Bs often have a sitting room where guests can relax and read the paper, sip on a glass of wine, etc., so Sandra wanted to create a welcoming space in order to do just that. The colorful fabric on the ottoman inspired the overall color

scheme of the room. Hues in the ottoman are seen throughout the space to maintain a cohesive look and even influenced a custom Betsy Douglass painting hanging above the gilded fireplace. The limited edition black and white photograph by Tripp Smith helped ground the space.

THE DESIGNER:

**SANDRA ERICKSEN** of Sandra Ericksen Design

For more information, email Sandra at [sandraericksen@gmail.com](mailto:sandraericksen@gmail.com) or visit [sandraericksendesign.com](http://sandraericksendesign.com).







Photography by Patrick Brickman • Bottom Left Photo by Nick Cannon

#### THE SPACE:

## 3RD FLOOR LIVING AREA

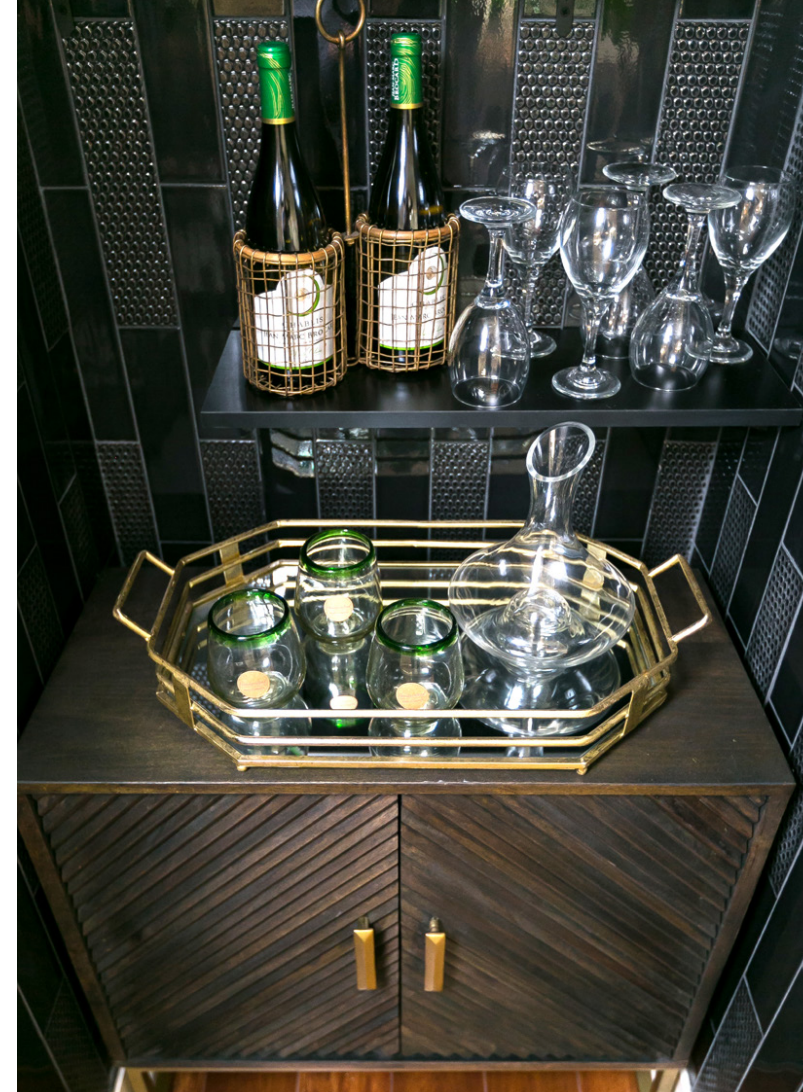
Uneven walls and weird angles might have deterred some designers but not Wendy. She turned the asymmetric 3rd floor into a chic living area. Inspired by a Thibaut leopard print wallpaper, she had the walls and ceilings hand painted by a local artist, David Glunt. The custom ceiling and painted walls became the staple

in this room. The cozy retreat offers drama with a simple black and white palette in various patterns and textures. A window seat offers the perfect space to crawl up and read a good book, and the gray sofa provides ample seating for several people. Wooden birds, snake plants, green books, and candle sticks add life to the décor.

#### THE DESIGNER:

WENDY HOOVER of Designapple Home

For more information, email Wendy at [designapplehome@gmail.com](mailto:designapplehome@gmail.com) or call Designapple Home at (843) 619-1593.







Photography by Kim Graham

THE SPACE:

# THE GARDEN BEDROOM

Driven to create a space that was reminiscent of Paris in the springtime, Terry designed the bedroom with an elegant color palette combination of pink, coral, cerulean, and violet that invoke grace and serenity in the space. The smaller, yet intimate space, had multiple design details that played well with Terry's European

inspired design—a fireplace, bookcases, and tall French doors that opened onto the piazza. Springtime in Paris is expertly achieved throughout Terry's design including the French luxury linens depicting flowers, birds, and butterflies, the crystal chandelier, antique gold settee, and Louis XV-style vintage armchairs.

THE DESIGNER:

TERRY STEPHENSON of Juxtaposition Home & Garden

For more information, call Juxtaposition Home & Garden at (843) 729-9755 or visit [juxtapositioncharleston.com](http://juxtapositioncharleston.com).







Photography by Anne Rhiatt



THE SPACE:

## THE BACK STAIRWELL

A dark, often utilitarian, space known as the back stairwell was transformed with wallpaper to brighten it up. The floor-to-ceiling window received a special covering to help accentuate the vastness of it. Inspired by the name of the bed and breakfast, The Bee and Blossom, Emily used floral wallpaper and a blue shade

in the stairwell. The space served a purpose as passageway throughout the home and Emily's desire to make the space pretty as well was achieved with her pastel palette and delicate touch. The used-to-be "forgotten" space now serves a stylish purpose and will hold up against the daily use as guests and staff of the inn come through.

THE DESIGNER:

EMILY WOOD of Emily M. Wood Interiors

For more information, call Emily M. Wood Interiors at (843) 568-9745 or visit [emilymwoodinteriors.com](http://emilymwoodinteriors.com).







Photography by Susan Sully

THE SPACE:

# THE SECOND FLOOR PIAZZA

A spacious piazza allowed Alexandra to play with seating arrangements and greenery. With a garden below, Alexandra wanted to continue the feel of being in the garden while staying upstairs. With so many opportunities for seating areas, Alexandra was able to add a unique touch to each. In the

first area when you walk onto the piazza, you'll find a wrought iron door that became a lattice canvas to display an array of plants. Battling the pollen so prevalent in springtime in Charleston was a bit difficult, but it didn't stop Alexandra from creating a calming, outdoor oasis overlooking the garden below.

THE DESIGNER:

ALEXANDRA HOWARD of Alexandra Howard INC.

For more information, call Alexandra Howard at (843) 367-4623 or visit alexandrahowardinc.com.

